



# COOLEMAN RIDGE PARKCARE GROUP Newsletter October 2002

## Previous Sunday meeting September 15th.

An afternoon of transplanting.

Elaine had watered the plants well so digging them up was no problem. And Janice had succeeded in getting a key to the first gate at Namatjira Drive enabling us to take the cars a little closer to the planting site. From the second gate it was all portage of the boxes and garbage bags of grasses and shrubs to the gully where Rowan was keen to challenge the *Phalaris* infestation. Janice and Malcolm proved to be steady hole-diggers and Rowan would have given even Crooked Mick a run for his money.

We filled the 60-odd holes and hauled in water on foot reserving just enough strength to perform a surprisingly successful rain dance. ☼

## Next Sunday meeting October 20th.

### AGM

- 1.30 - 4 pm;
- Namatjira Drive entrance. If it rains we will instead meet at Janice's home - ring her before 1 pm if you are in doubt;
- make it a party - bring a snack to share;
- a brief general meeting will follow. ☼

### Future programme

November 17<sup>th</sup> Plant Walk to be led by a botanist

December 15<sup>th</sup> Tree survey ☼

### Web page

It just gets more and more exciting! Now there are camera icons in the Plant List linking straight to the scans, and additional scans are steadily being posted.

The address is [www.webone.com.au/~kpelling](http://www.webone.com.au/~kpelling). Your comments and suggestions would be very welcome.

You can ring Karina on 62882097 or email her at: [kpelling@webone.com.au](mailto:kpelling@webone.com.au). ☼

### September log

240902 echidna on the northern slopes of Cooleman Trig hill, between the dirt road and the houses, at 6.15 pm ☼

## Activity figures for September

Hours from 8 people - 34 for weeding; 17 for administration;

1½ for a meeting; 10 for transplanting.

Contact Janice with your hours at the end of each month on 6288 3953 or e-mail at [janice.paul@aph.gov.au](mailto:janice.paul@aph.gov.au) Could you please let Janice know what weeds you are removing when you provide the statistics. This level of detail is forwarded to CNP. ☼

## Biodiversity

Dr Trudi Mullett of CSIRO Plant Industry presented a public lecture at CSIRO Discovery.

Points made include:

- Weeds are a major threat to Australia's biodiversity. But it is not only introduced plants that are posing a problem, our agricultural crops and even some of our natives are getting away.
- Weeds compete with local native plants and in the worst cases can totally destroy healthy, diverse ecosystems. As weeds displace local native plants they alter habitat for wildlife by changing available food, shelter and nesting resources.
- Weed invasion poses a serious threat to biodiversity conservation and reduces the uniqueness of invaded Australian ecosystems, but with good weed management the conservation prospects of these areas can be improved. ☼

## The Tree Survey

It is now five years since we started the tree survey and there are over 1000 entries in our data base. For almost 500 of these trees we have complete data, the latest set provided by Malcolm. There are still a lot of trees to be included, particularly in the southern areas, but it is already time to start the second set, ie. to find out how the trees have changed during the five years. Before getting going on that I would like to discuss with the group at the AGM what should now be emphasised and how we should organise the data to be able to draw conclusions from them.

Gösta ☼



## What's around

Family: FABACEAE



*Glycine clandestina*

Twining Glycine.

*glycys* - Gr. sweet.

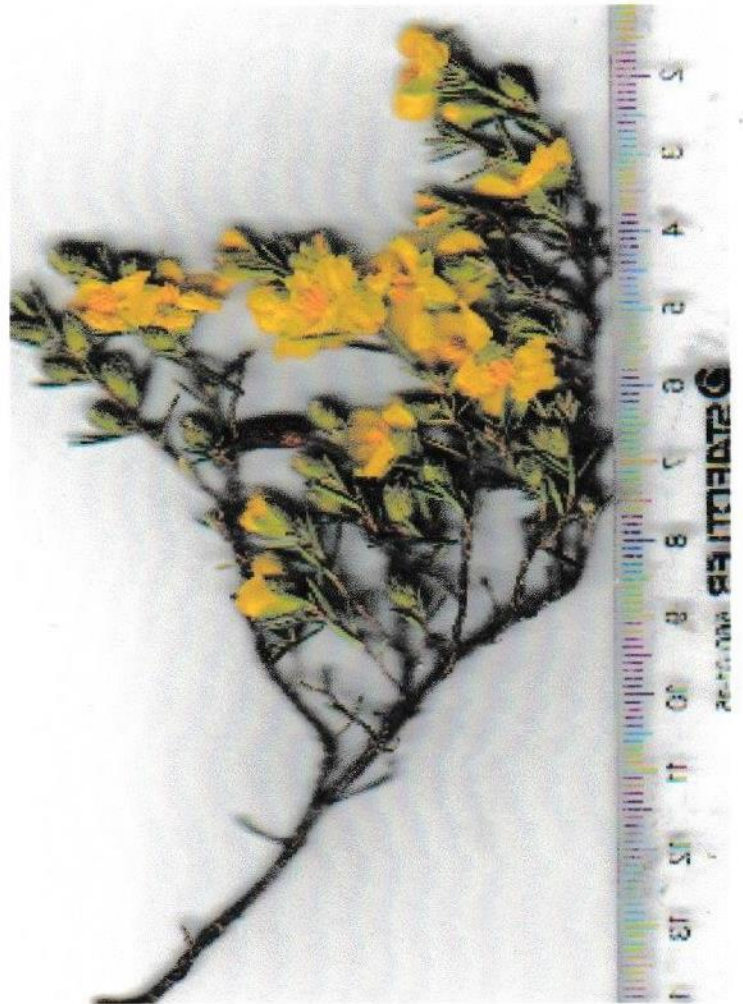
This vivid, mauve native climber is related to the Soyabean

### Members

Reet has seen Early Nancy - *Wurmbea dioica* - but my colony hasn't appears yet. Too dry, perhaps.

Reet also points out that we should be on the look-out for orchids. Her yellow *Diuris sulphurea* have flowered between 25<sup>th</sup> October and 25<sup>th</sup> November depending on the season. The pink *Diuris dendrobioides* has flowered between 20<sup>th</sup> November and 20<sup>th</sup> December. They certainly occur elsewhere on the Ridge, and have been reported by **Elizabeth**. Look especially round rocky outcrops. And let us know!

Family: DILLENIACEAE



*Hibbertia obtusifolia*

Hoary Guinea-flower

George Hibbert was a merchant and patron of botany with a botanical garden in Chelsea, London. He died in 1838

*obtusifolia* - bluntly pointed leaves.  
A spectacular, yellow native. ☼

**Karina** spotted the Echidna that ambled into our Log.

**Kathryn** tells of encountering 12-13 year old boys moving rocks last year looking for reptiles. She cautioned them and is ready with the rangers' phone number if she catches them at it again. She has since seen rocks displaced.

### AGM

See you at the AGM. There will be the election of office bearers, and some constitutional points to address, as well as general discussion of group direction. ☼